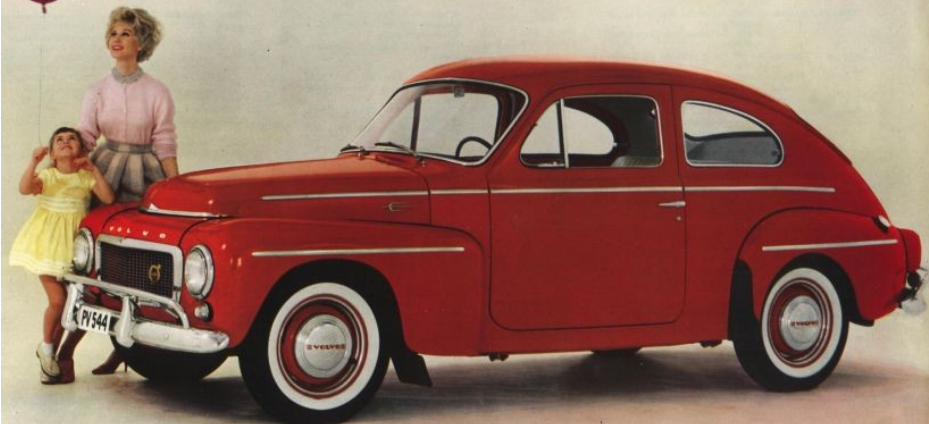


PV 544



the family sports car

SHERWOOD MOTORS LTD.
1205 KINGSWAY
VANCOUVER 10, B.C.
PHONE JR. 4-9171

VOLVO PV 544



VOLVO PV 544 — the family sports car

This sensational Swedish-built 5-passenger sedan combines the high speed performance of a sports car with the safety, roominess and comfort of the ideal family car. It gives amazing economy — up to 35 miles per gallon — yet boasts a dynamic 85 HP twin-carburettor sports engine that's brilliantly alive and exceptionally responsive. Balanced body weight and smooth suspension plus arm-chair comfort insure relaxed, carefree motoring. The Volvo PV 544 is a product of superb Swedish engineering.

SPECIFICATIONS: VOLVO PV 544

Type designations:

P 54408 = model with four-speed transmission.
P 54409 = model with three-speed transmission.

Engine: Four-cylinder, overhead valve, type B16B.

Bore: 3.125".

Stroke: 3.15".

Displacement: 97 cu. in. (1.58 liters).

Compression ratio: 8.2:1.

Output: 85 h.p. at 5,500 r.p.m.

Torque: 87 lb.ft. at 3,500 r.p.m.

Oil filter: Fullflow.

Carburettors: Twin SU horizontal.

Clutch: Single dry disk.

Transmission: Type M4, fully synchronized.

Number of gears: Four forward, one reverse.

Optional transmission: Type H6, 2nd and 3rd speed synchronized.

Number of gears: Three forward, one reverse.

Propeller shaft: Divided.

Center bearing: Located in sound- and vibration-insulating rubber blocks. Bearing requires no servicing.

Rear axle: Hypoid type. Axle shafts carried in taper roller bearings.

Steering gear: Cam and roller.

Front suspension: Individual suspension with coil springs and control arms. Double-acting hydraulic, telescopic shock absorbers. Stabilizer.

Rear suspension: Coil springs. Rear axle carried on two rubber-mounted support arms, two torque arms and a track bar. Double-acting hydraulic, telescopic shock absorbers.

Foot brakes: Self-centering hydraulic Duo-Servo brakes.

Total brake lining area: 157 sq. in.

Hand brake: Mechanical operation on rear wheels only. Lever between front seats.

Wheels: Pressed steel disk type. All wheels balanced.

Tires: Tubeless, low pressure 5.90—15". White sidewalls.

Body: All-welded, integral construction steel body. Thoroughly rust-proofed.

Fenders: Undersheathed.

Fuel tank: Located at rear. Capacity 9 1/2 US gallons.

Battery: 6-volt, 85 amp-hour.

Generator: 50-amp., fan-cooled, automatic voltage control.

Starter motor: 0.75 h.p.

Starter switch: Built into ignition switch which has extra "radio" position for use of accessories when engine is not running.

Ignition coil: Connected to ignition switch by tamperproof armored cable.

Headlamp dimmer: Foot-operated switch. Headlamp beam warning light in instrument panel.

Directional signals: Flasher type front and rear, visible and audible warning signals in instrument panel. Self-cancelling control under steering wheel.

Instrumentation: Padded instrument panel containing combined instrument with fuel gauge, temperature gauge, speedometer, milometer. Panel also contains warning lamps for battery charging, oil pressure, directional signals, headlamp beams. Rheostat-controlled instrument lighting.

Heater, defroster and fresh air system: Controls grouped to the left of instrument panel.

Windshield wipers: Double, two-speed electric wipers with automatic parking.

Sun visors: Double padded sun visors.

Ashtrays: One in instrument panel, one in front of each rear arm rest.

Safety belt fittings: Fittings for VOLVO type diagonal safety belts.

Tools: Complete tool set and jack.

Spare wheel: Stowed vertically in side of luggage compartment.

Wheelbase: 102 1/2".

Overall length: 177".

Overall width: 62 1/2".

Height: 60 1/4".

Tread, front: 51".

Tread, rear: 51 1/4".

Weight, incl. fuel, oil and water: 2,140 lb.

The factory reserves the right to modify prices, designs and equipment.



AB VOLVO
Export department
GÖTEBORG
SWEDEN

UR 6749, 4. 59. 900.000 (USA)

Importers: VOLVO IMPORT, INC. 452 Hudson Terrace, Englewood Cliffs, N.J.

Distributors: VOLVO DISTRIBUTING, INC. 452 Hudson Terrace, Englewood Cliffs, N.J.
SWEDISH MOTOR IMPORT, INC. 3301 West 12th St., Houston 24, Texas
AUTO IMPORTS, INC. 13517 Ventura Blvd., Sherman Oaks, Calif.

In Canada: AUTO IMPORTS (SWEDISH) LTD.

Head Office: 1350 East Georgia St., Vancouver 6, B.C.

Branch Office: 48 Crockford Blvd. Scarborough (Toronto), Ont.

J. E. FRENCH CO.
JUAN NESS AT WASHINGTON
SAN FRANCISCO

Ask for
RON DAWSON

Printed in Sweden

